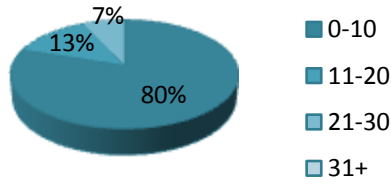


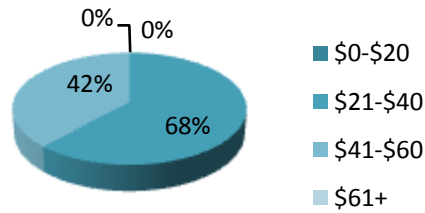
# Chicago Survey Results

October 5, 2008

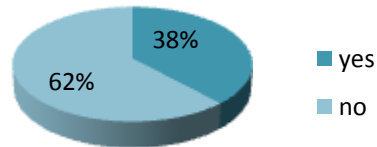
0-10	80%
11-20	13%
21-30	7%
31+	0%



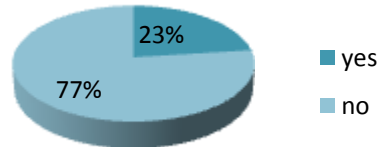
\$0-\$20	0%
\$21-\$40	68%
\$41-\$60	42%
\$61+	0%



yes	38%
no	62%



yes	23%
no	77%



\$0	91%
\$1-\$50	0%
\$51-\$100	0%
\$101-\$150	9%
\$151+	0%

